



LARK MAX Quick Guide

V1.0.0

Introduction

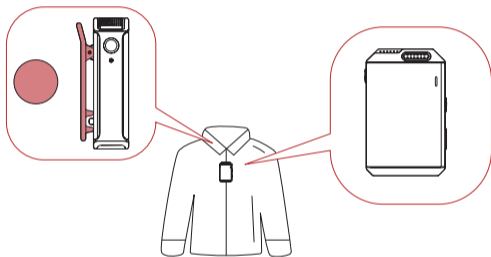
Thank you for purchasing Hollyland LARK MAX wireless microphone system. Please read this quick guide carefully before using the product.

For more detailed information, please scan the code to view the product user manual.



Product Operations

The preferred position for attaching the transmitter is the collar near the speaker's neck area. If the speaker's voice is louder, position the transmitter in the upper chest area. The transmitter can be attached via its back clip or the clip magnet.



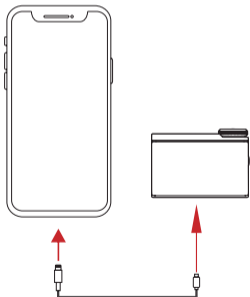
Note:

Placement of the transmitter in different positions will result in recorded sound volume fluctuations. Avoid any obstructions of the transmitter during recording. It is recommended to use the furry windshield to prevent audio interference when using the transmitter outdoors.

Product Operations

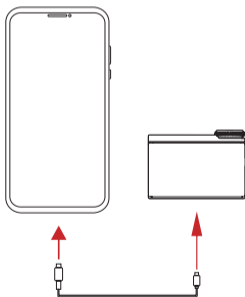
Connecting the Receiver to an iPhone

1. Connect the receiver to an iPhone using a USB-C to Lightning cable.
2. A USB connection icon will be displayed on the receiver touchscreen.
3. Open the recorder or camera app on the mobile phone to start recording.



Connecting the Receiver to an Android Phone with a USB-C Interface

1. Connect the receiver to an Android phone with a USB-C interface using a USB-C to USB-C cable.
2. A USB connection icon will be displayed on the receiver touchscreen.
3. Open the recorder or camera app on the mobile phone to start recording.

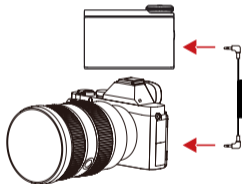
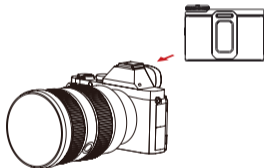


Note: It is recommended to use the original USB-C to Lightning and USB-C to USB-C cables. Otherwise, compatibility issues may occur, which could result in sound distortion or others.

Product Operations

Connecting the Receiver to a Camera

1. Attach the receiver to a camera via the hot shoe or cold shoe using the back clip.
2. Connect the 3.5mm audio output interface on the receiver to the 3.5mm audio input interface on the camera using a 3.5mm TRS to 3.5mm TRS cable.
3. Set the recording volume of the camera to the lowest and the output volume of the receiver to the medium to ensure the best recording level.



Product Operations

Pairing

The transmitter and the receiver are paired by default. Follow either of the following two ways to pair the transmitter and the receiver if they are disconnected.

1. Auto pairing: Place the transmitter and the receiver in the charging case, and they will pair automatically. (Figure 1)
2. Manual pairing: Turn on the transmitter and the receiver, and press and hold the pairing button on the transmitter to enter the pairing mode. In this case, the transmitter status indicator light flashes quickly. Then, select **System Settings** on the receiver touchscreen and tap **Pairing** to start pairing. If the transmitter status indicator light turns steady blue, pairing is successful. (Figure 2)

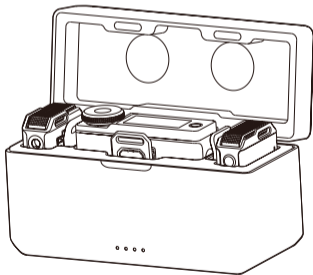


Figure 1

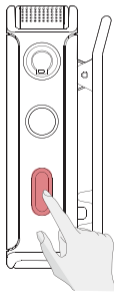
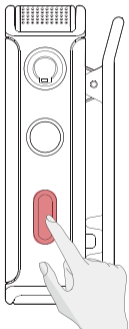


Figure 2

Product Functions

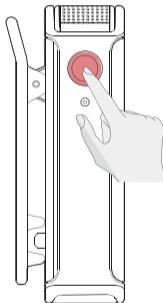
Noise Cancellation

Press the noise cancellation button on the transmitter to enable the noise cancellation function. In this case, the transmitter status indicator light turns green.



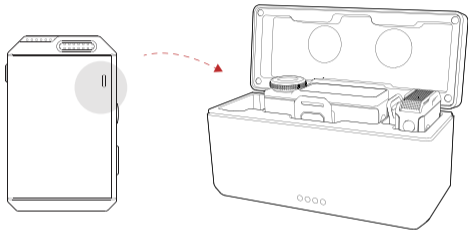
Recording

Press the REC button on the transmitter to enable the recording function. In this case, the transmitter REC indicator light turns steady red.



Product Functions

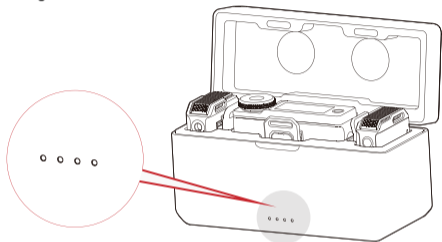
Charging and Storage



If the transmitter status indicator light flashes red, please charge the transmitter by placing it in the charging case or via the USB-C interface.

Product Functions

It is always recommended to place the transmitter and the receiver in the charging case for charging and storage after each use.



Battery Level Indicator Light Description of the Charging Case

Pattern	Battery Level
One LED ON, flashing red	Low battery. The transmitter and the receiver cannot be charged using the charging case.
One LED ON	25%
Two LEDs ON	50%
Three LEDs ON	75%
Four LEDs ON	100%

