

Dual Rack Mount Multi-Functional High Resolution LCD Monitor



User Manual

1. Product Overview

Thank you for using our photography, broadcast kits Dual Rack Mount Multi-Functional Color LCD Monitor. This monitor adopts advanced integrated circuits, high-quality IPS LCD panel, which makes it high brightness, low power consumption, stable performance, no radiation, strong compatibility, and adjustable color temperature control etc. Advanced features include Peaking Focus, Center Marker, Screen Marker, Image Flip, Check Field Color Temperature Adjustment etc. It is an ideal NLE (Nonlinear Edit) matching monitor.

To meet different customers' needs, our monitor has the serial digital interface signals SDI, high-definition multimedia interface HDMI, composite video signals CVBS input & output port

To ensure best use of the unit, please read the user's manual carefully.

CAUTION

1. Please use the adapter attached in the accessory, if necessary, please use qualified adapter.
2. Please do not store or use in too cold, too hot or humid place.
3. Please keep the monitor away from the strong light while using this product to ensure the image effect and long-term use.
4. Please avoid heavy impact or drop onto the ground.
5. Please do NOT use chemical solutions to clean this product.
Please wipe the monitor with a clean soft cloth to maintain the brightness of the surface.
6. No adjustable components in the monitor. Please do not take apart or repair the unit by yourself, to avoid the damage of the product.

Product Feature

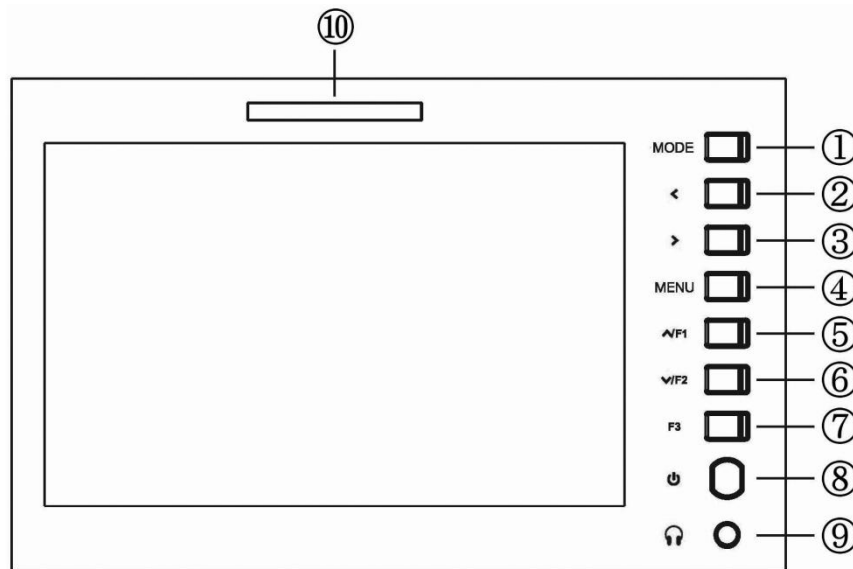
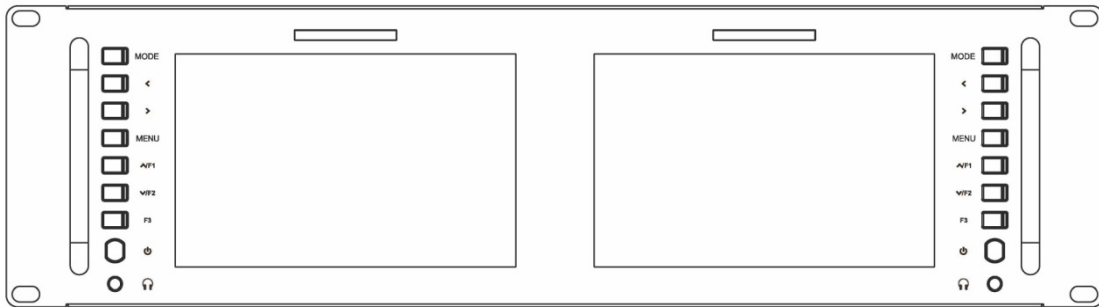
- ◆ Focus Assist Function
- ◆ Screen Marker, Center Marker (cross mark) display setting
- ◆ Screen Marker: 96%, 93%, 90%, 85%, 80%, 2.35:1
- ◆ Image Freeze: The current picture still (capture function)
- ◆ Image Flip: H/V Flip, H Flip, V Flip of the image around flip
- ◆ Check Field: To switch among Mono, Red, Green, Blue
- ◆ P2P: The display mode that makes the resolution of the image is consistent with display of the physical resolution.
- ◆ Aspect Ratio: To change the display to ratio Panorama, Auto., Zoom 1, Zoom 2, 4:3, 16:9.
- ◆ Image zoom function can set Zoom All, U/D Zoom, L/R Zoom.
- ◆ Panel buttons (F1 ~ F3) function custom settings
- ◆ LED backlight, Image display more brighter, screen does not flicker.
- ◆ Front panel stereo earphone output.
- ◆ Multiple signal output port, flexible use.
- ◆ Can set the monitor menu and functions through Ethernet connection.

CONTENTS

1. Product Description	4
1.1 Front Panel Features	4
1.2 Rear Panel Features	5
1.3 Power Input Way	6
1.4 TALLY Indicator Connection	7
2. Ethernet Connection	7
3. Button Operation Instruction	12
4. Menu Function Introduction	13
5. Support Signal Formats	19
6. Parameters	19
7. Trouble Shooting	20



1. Product Description

1.1 Front Panel Features

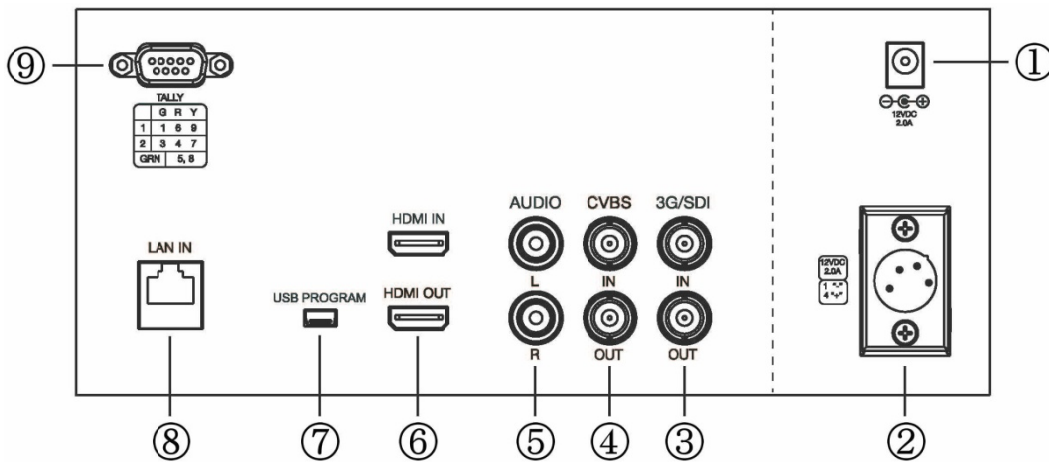
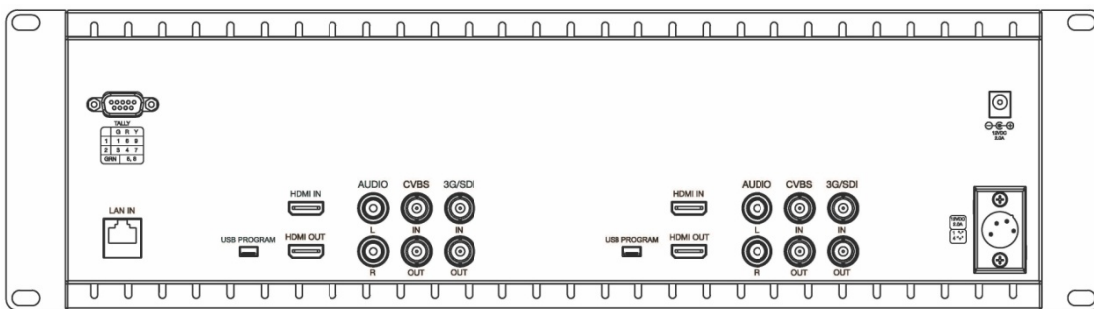



1. **MODE:** Input signal selection and confirm.
2. **<** : Volume down; in menu operation, it is for the selection of the menu function or menu analog decrease.
3. **>** : Volume up; in menu operation, it is for the selection of the menu function or menu analog increase.
4. **MENU:** Menu button, enter or exit menu.
5. **^/ F1** : No menu display, it is F1 button; when enter into menu bar, it is for the up item selection.
6. **v/ F2** : No menu display, it is F2 button; when enter into

menu bar, it is for the down item selection.

7. **F3** : Custom button F3
8.  : Power switch
9.  : Earphone jack port.
10. TALLY indicator

1.2 Rear Panel Features



1.  : DC power input port
2. 4-pin XLR DC12V power input
3. **3G/SDI**: (Up) SDI serial data input
(Down) SDI serial data output
4. **CVBS** : (Up) Composite video broadcast signal input
(Down) Composite video broadcast signal output

5. **AUDIO:** (Up) Audio signal L stereo input
(Down) Audio signal R stereo input
6. **HDMI:** (Up) High definition multimedia interface input
(Down) High definition multimedia interface output
7. **USB PROGRAM:** USB upgrade port
8. **LAN IN:** Ethernet LAN Connector
9. **TALLY:** TALLY indicator input port

1.3 Power Input Way

There are two ways of power supply to our monitor:

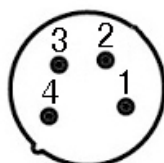
- A. The direct plug-in DC power input port supply. Please use DC5.5*2.1m DC power plug, power input polarity as shown

below: 

Please use the qualified power supply with output power no less than 20W DC 9-24V.

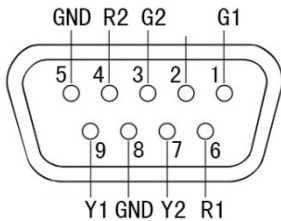
- B. Via 4 pin XLR interface power supply.

Polarity of the 4-pin XLR power input as shown below, please note the polarity of the power input, otherwise it may damage monitor.



Pin number	Signal
1	GND
2	No connection
3	No connection
4	+12V

1.4 TALLY Indicator Connection

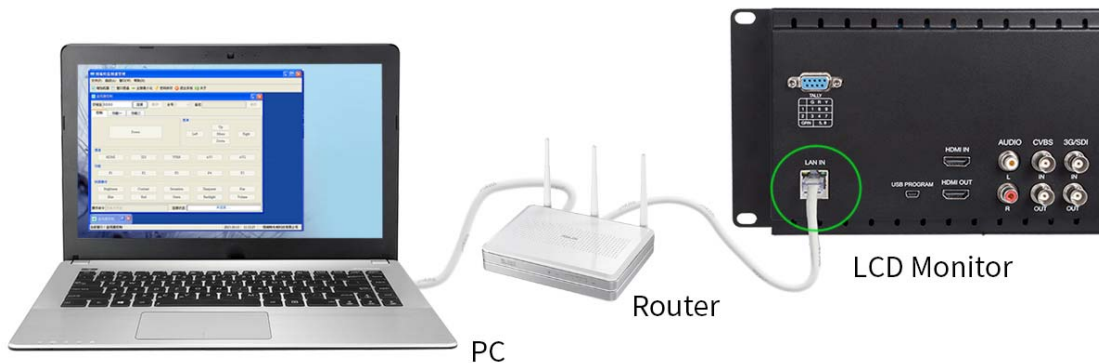


Indicator Color	Pin Connection	
	1 Screen	2 Screen
Green	1-5	3-8
Red	6-5	4-8
Yellow	9-5	7-8


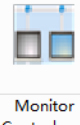
GND port 5 and 8 is sharing

2. Ethernet Connection

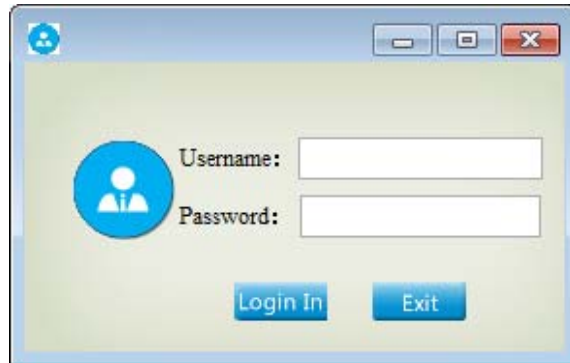
Our monitor is equipped with Ethernet interface, and users can connect the pc computer with our monitor through the Ethernet port. Users can use the software to control the monitor and send their control and command to the specific monitor, as follows:



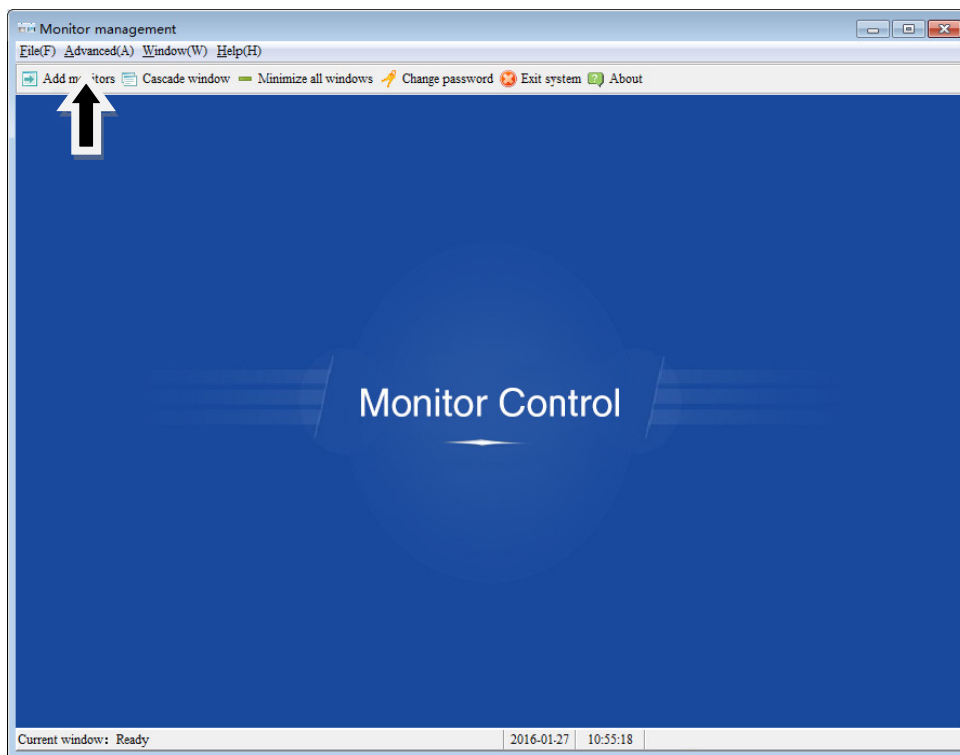
Connect the LAN port on the back of the monitor to the network. After connection, the monitor will display the same IP address with that device.

Turn on pc computer, Open  , Click  Monitor Control.exe

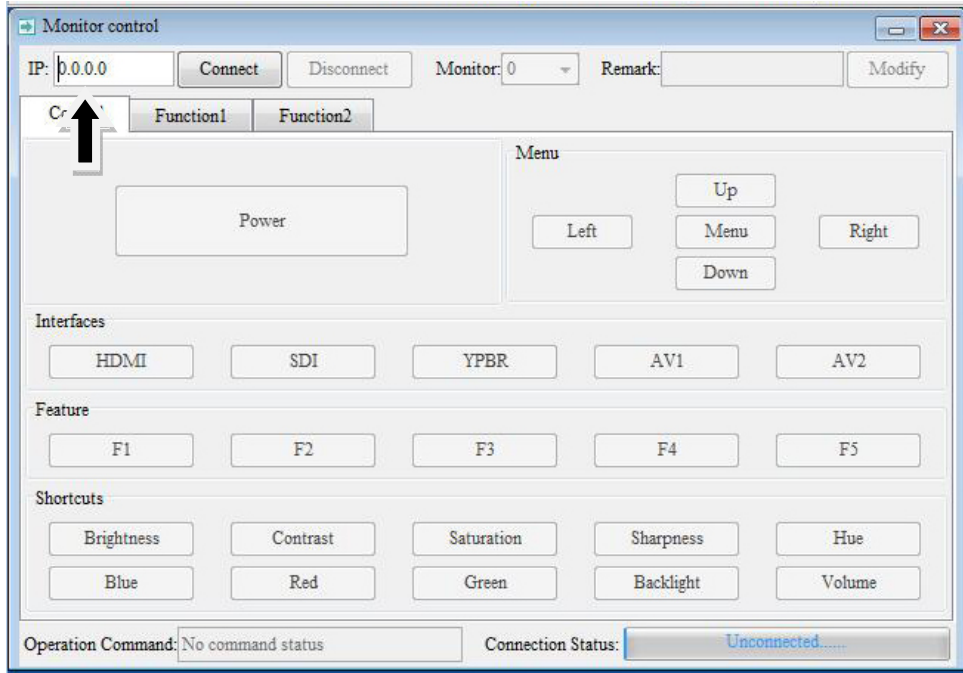
Then, Input: Username/ Password, Click Login In



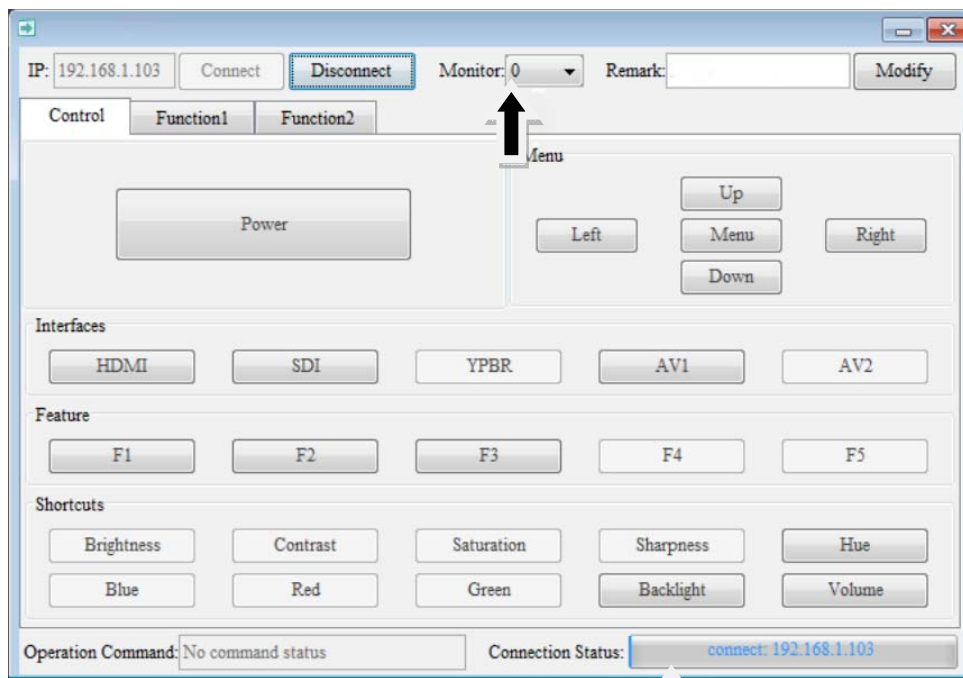
After login in, Click: Add monitor



Input IP address (The same as the IP address displayed on the monitor.)



Select the controlled monitor (Can check the display No. on the monitor screen)



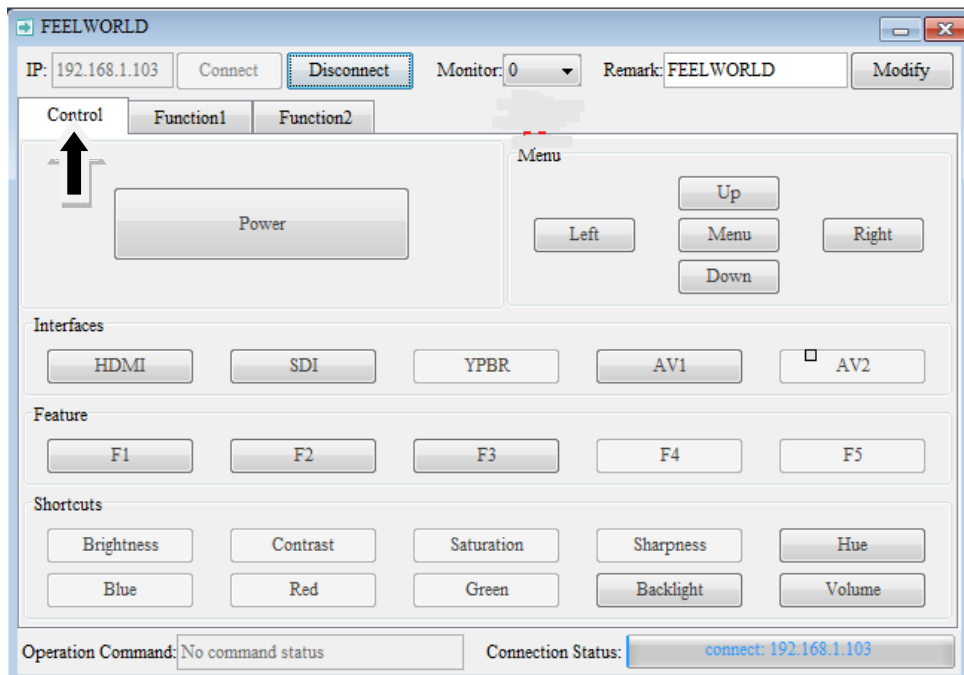
Check: Connection Status,

If connected, the IP address will be displayed.

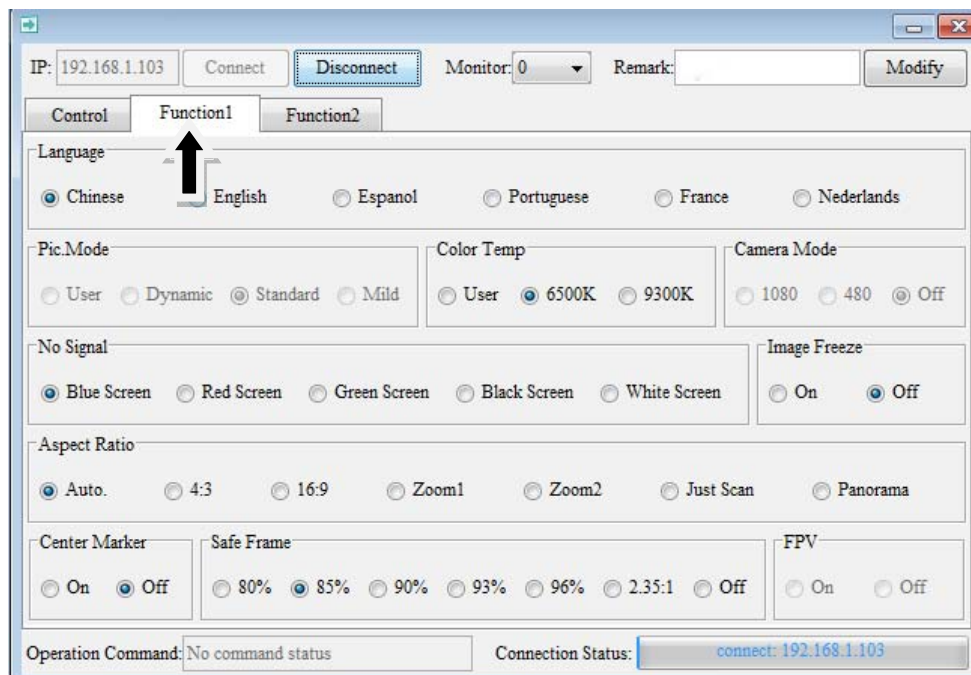


Then users can click the corresponding control bar to control and command the parameters:

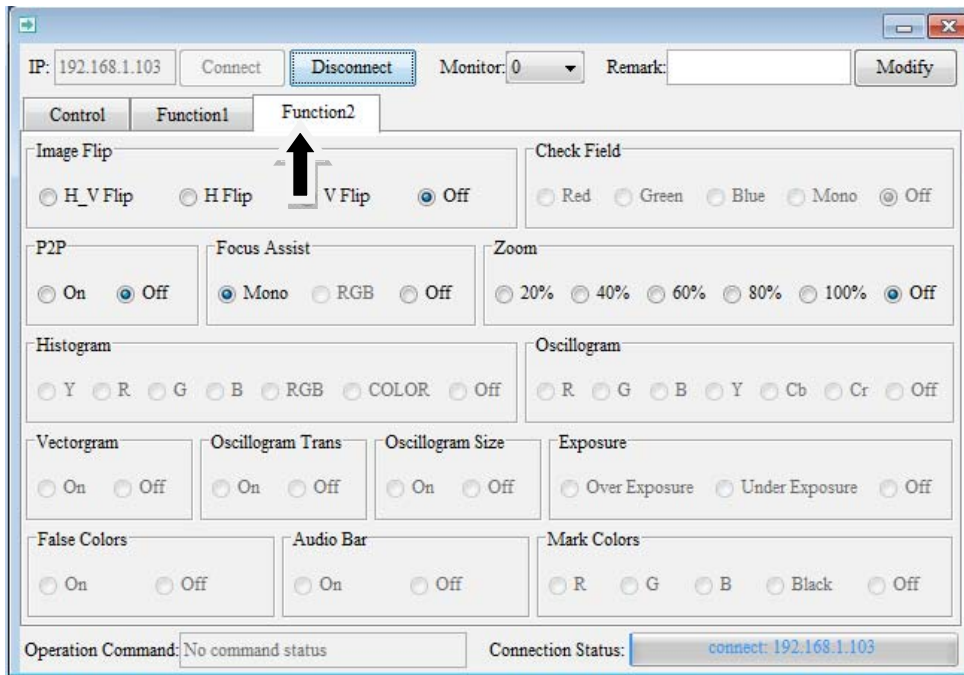
Control:



Function1:



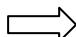
Function2:

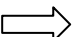


3. Button Operation Instruction

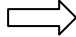
(Control the corresponding screen)

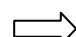
MODE  AV, SDI, HDMI signal input selection.

<  Volume down; In menu operation, it is for the selection of the menu function or menu analog decrease.

>  Volume up; In menu operation, it is for the selection of the menu function or menu analog increase.

MENU  Enter or exit menu.

^/F1  No menu display, it is F1 button; when enter into menu bar, it is for the up item selection.

∨/F2  No menu display, it is F2 button; when enter into menu bar, it is for the down item selection.

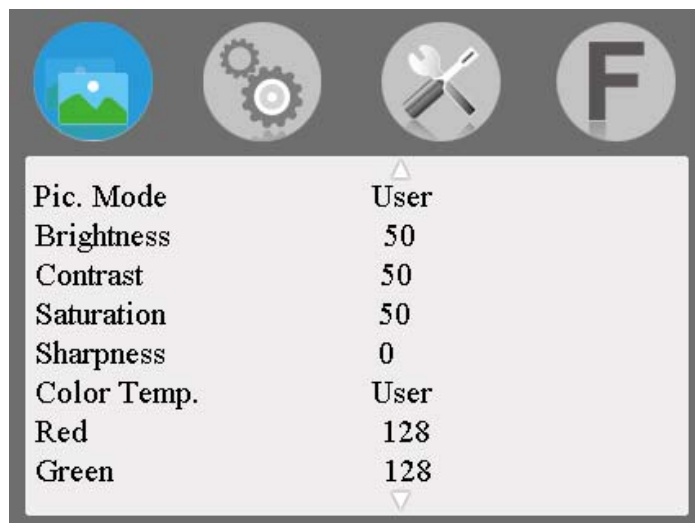
F3  Custom button F3.

  Power switch.

4. Menu Function Introduction



Image Color (including 2 pages)



※ **Pic. Mode:** Standard, Dynamic, Mild, User.

Select 'user' to adjust Brightness, Contrast, Saturation, Sharpness.

※ **Brightness:** 0~100.

To adjust image's brightness.

※ **Contrast:** 0~100.

To adjust the brightest and the darkest ratio of the image,

please note the sense of picture when adjust, proportion too high or too low will make the picture lose the color.

※ **Saturation: 0~100.**

To adjust color concentration.

※ **Sharpness: 0~100.**

Also called 'Resolution', is an indicator for the image plane definition and image edge sharpness. If sharpness is higher, then the details contrast on the image is higher, the image is more clearly.

※ **Color Temp.: 6500, 9300, User.**

When select '**user**', adjust the R/G/B to meet the different user's requirement for the different Color Temp.

※ **Tint: 0~100.**

On NTSC video mode, color tint is adjusted by Tint.



Setting (including 2 pages)

• Menu of Page One



※ **Language:** English 中文 Español Português
Français Nederlands Deutsc 日本語

Language is for OSD.

※ **Aspect Ratio:** Panorama, Auto., Zoom 1,
Zoom 2, 16:9, 4:3

To change the display ratio

※ **No Signal:** Black Screen, White Screen, Red
Screen, Green Screen, Blue Screen.

Color options of screen background when no signal.

※ **OSD Trans.:** Low, Middle, High, Off

To adjust the level of OSD transparency.

※ **OSD H:** 0~100.

To adjust the OSD position in horizontal.

※ **OSD V:** 0~100.

To adjust the OSD position in vertical.

※ **Zoom All:** 0~100.

Select this function, press </> button to adjust the

image to Zoom in or Zoom out.

※ **OSD Time: Off, 10Sec, 20Sec, 30Sec.**

The function is to adjust the menu time.

● **Menu of Page Two**



※ **U/D Zoom: 0~100.**

Press \langle / \rangle button to adjust the proportion of the image Up and Down to Zoom In or Zoom Out.

※ **L/R Zoom: 0~100.**

Press \langle / \rangle button to adjust the proportion of the image Left and Right to Zoom In or Zoom Out.

※ **Backlight: 0~255.**

To adjust the monitor backlight brightness.

※ **USB Upgrade**

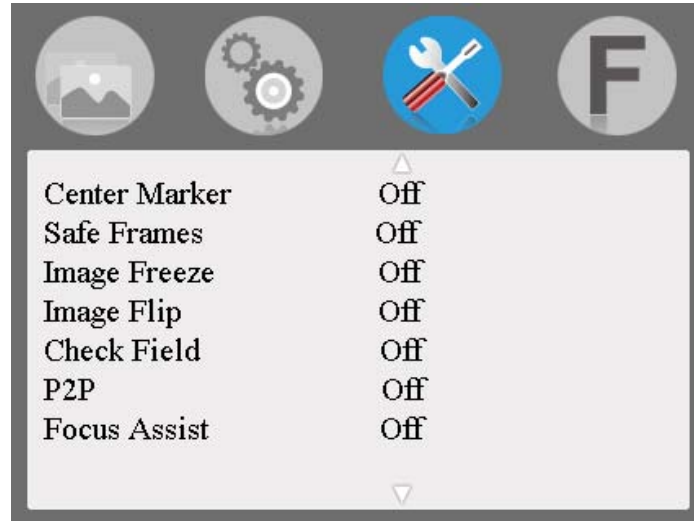
When need to upgrade the software, copy the file to the U disk, then through the USB cable to connect with upgrade USB port, then press \rangle button to confirm. After upgrade, monitor will automatically restart.

※ **Reset**

Press > button to confirm, all monitor analog data back to original setting.



Function



※ **Center Marker: On, Off.**

To set center mark (cross mark) display

※ **Safe Frames: off, 96%, 93%, 90%, 85%, 80%, 2.35:1**

To adjust screen marker

※ **Image Freeze: On, Off.**

The current picture still (capture function)

※ **Image Flip: Off, H_V Flip, H Flip, V Flip.**

The H_V Flip, H Flip, V Flip of the image around flip.

※ **Check field: Mono, Red, Green, Blue, Off.**

Displays the picture in monochrome (black & white) or in individual primary colors.

※ **P2P: Off, On**

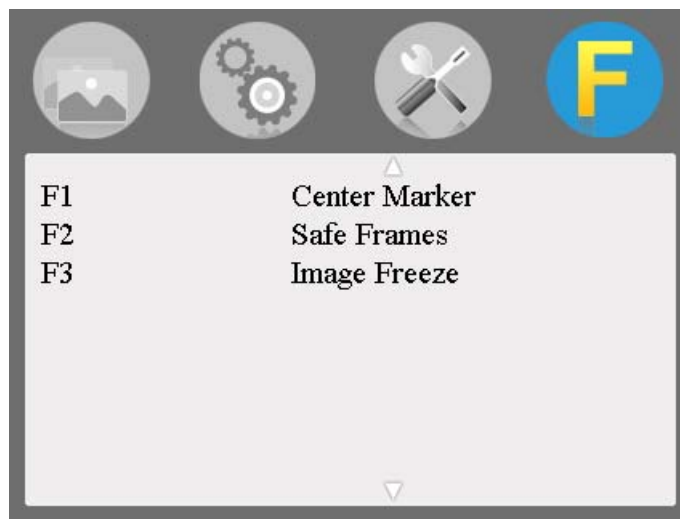
The display mode makes the resolution of the

image consistent with display of the physical resolution.

※ **Focus Assist: Off, On**

Under HDMI input, select this function, Peaking (Superimpose red highlight over parts of the monochrome image in focus).

F **Shortcut Button Setting**



※ **F1: Center Marker, Safe Frames, Focus Assist, Image Flip, P2P, Image Freeze, Check Field, Aspect Ratio, Backlight**

Choose F1, then press < / > button to pop up function bar, can select (Center Marker, Safe Frames, Focus Assist, Image Flip, P2P, Image Freeze, Check Field, Aspect Ratio, Backlight), then press √/∧ button to select one of options as definition function. Press “MENU” button to confirm and press √ button back to next F2 custom setting.

※ **F2: Customized button, see F1**

※ **F3: Customized button, see F1**

5. Support Signal Formats

Signals	Support signal formats
Video	PAL/NTSC auto recognize
HDMI	480i/576i/480p/576p 720p(60/59.94/50/30/29/25/24/23.98) 1080i(60/59.94/50) 1080(60/59.94/50/30/29.97/25/24/24sF/23.98/23.98sF)
SDI	480i/576i 720p(60/59.94/50/30/29/25/24/23.98) 1080i(60/59.94/50) 1080p(60/59.94/50/30/29.97/25/24/24sF/23.98/23.98sF)

6. Parameters

Panel Size	7" IPS LCD×2
Resolution	1280 × 800 pixels
Dot Pitch	0.117 (H) × 0.117 (V) mm
Aspect Ratio	16:10
Brightness	400 cd/m ²
Contrast	800:1
Response Time	Tr=14ms; Tf=11 ms
Viewing Angle	89°/89°(L/R) 89°/89°(U/D)
Backlight	LED
Input Voltage	DC 9~24V


Input Signal	3G-SDI, HDMI, Video, Audio(L/R)
Output Signal	3G-SDI, HDMI, Video, Stereo Headphone
Power Consumption	≤ 20 W
Special Function	TALLY indicator
Working Temperature	- 20~55℃
Storage Temperature	- 30~60℃
Unit Size	482.6 L × 130.0 H × 30.5 D mm
Unit Weight	≈1890g

7. Trouble Shooting

If there is any problem when using the unit, please try following ways to inspect and solve. Please contact us if you still can not solve it or have other problems.

● Without image display

Trouble shooting

◆ Video cable off or connect incorrectly	Check the quality of the cable, make sure the correct input interface
◆ Without video signal input	Check the signal source and output interface connect is correct or not
◆ Monitor is not be powered on	Check whether the power is connected, click “  ” button to confirm.

◆ Supply voltage instability	The power adapter plug is poor connected with the socket
◆ self-contained power supply, polarity connect inversely	Reference "Power Input Way" and reconnect

• Image/color display abnormal Trouble shooting

◆ Video cable poor contact	Change the video cable, try again
◆ Video signal interfered by external environment	Move to another environment to try again
◆ Video input signal amplitude too low	Check signal source video output, or change signal source and have a try.
◆ Menu color saturation adjustment closing	Enter menu to check color, or reset to factory settings
◆ Check Field set in mono or black & white	Reset Check Field, back to the color
◆ Image deformation	Reset the image ratio

• Earphone without sound Trouble shooting

◆ Audio cable off or connection properly	Confirm connected with the corresponding input port
◆ Volume adjustment was closed	Reset the volume control and adjust to a proper position.

◆ HDMI cable poor Connected	Check the quality of cable, or change cable and have a try
◆ No sound after switch video signal	Check whether there is an AUDIO signal input in AV Mode.

■ **Remark:**

★ If there are still other problems, please contact with our related technical persons.

★ If there are changes without prior notice.